

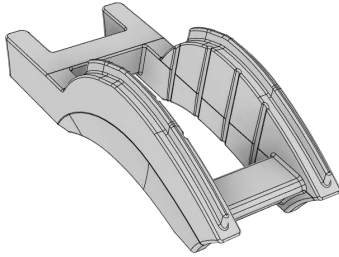


Vero Riser & Weight Retrofit Kit™

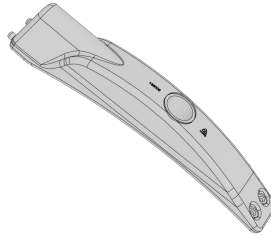
Owner's Manual

Le Manuel du Propriétaire | El Manual del Propietario

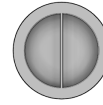
A



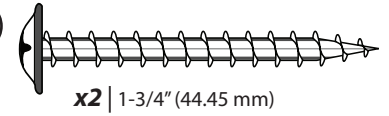
B



C

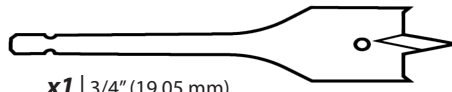


D



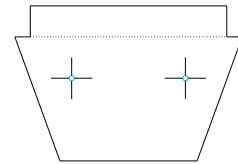
x2 | 1-3/4" (44.45 mm)

E



x1 | 3/4" (19.05 mm)

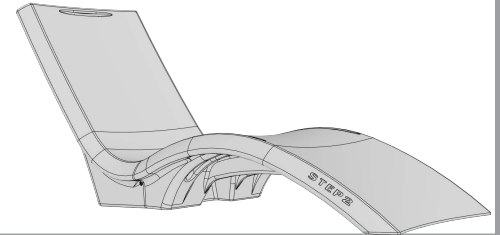
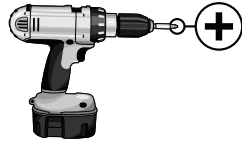
F



REQUIRED (Not Included)

REQUIS (Non inclus)

NECESARIO (No incluido)



⚠ **WARNING:**

CHOKING HAZARD

Small parts & sharp points present before assembly.
Adult assembly required.

⚠ **MISE EN GARDE:**

DANGER D'ÉTOUFFEMENT

Petites pièces et pointes acérées présentes avant le montage. Assemblage par un adulte requis.

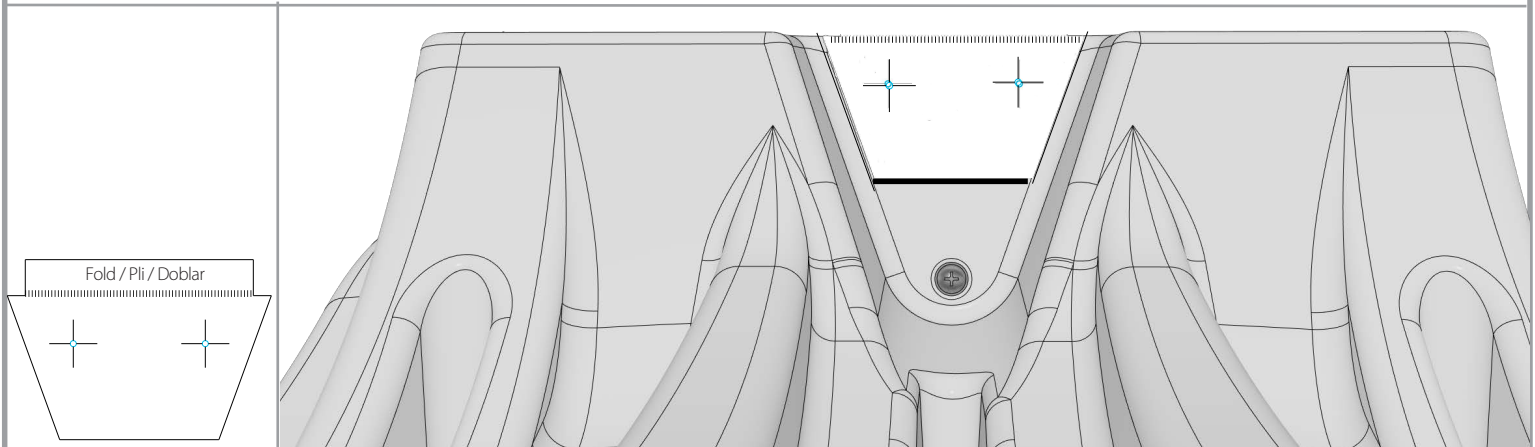
⚠ **ADVERTENCIA:**

RIESGO DE ASFIXIA:

Piezas pequeñas y puntas afiladas presentes antes del montaje. Requiere montaje por adulto.

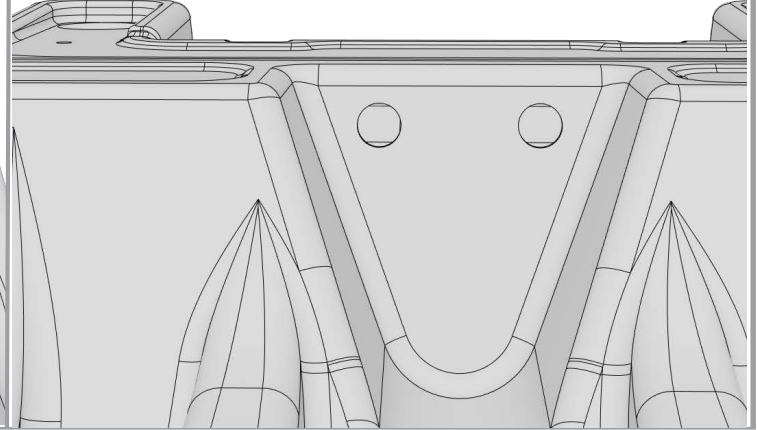
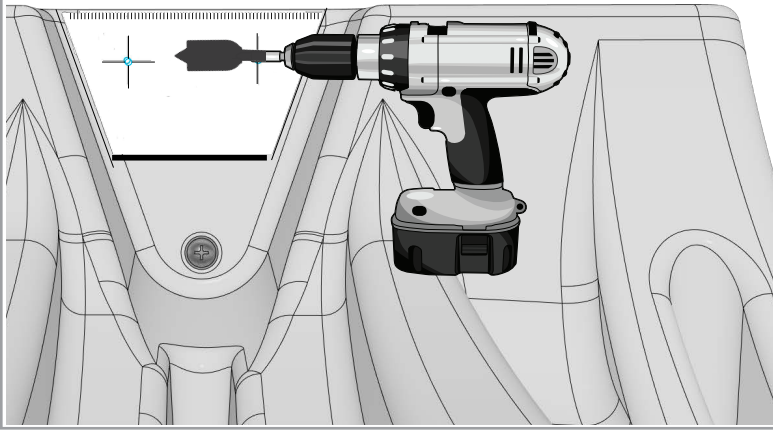
1

- After cutting out and folding template (E) use provided drill bit (D) to drill holes in Vero Lounger bottom.
- Après avoir découpé et plié le gabarit (E), utilisez le foret fourni (D) pour percer des trous dans le fond du Vero Lounger.
- Después de cortar y doblar la plantilla (E), utilice la broca proporcionada (D) para perforar agujeros en la parte inferior de la tumbona Vero.



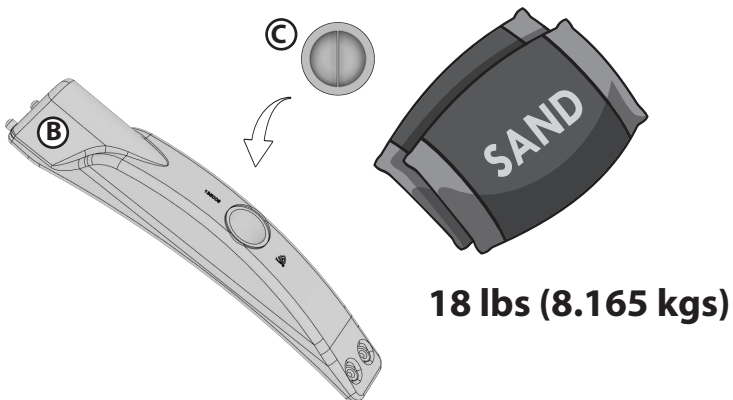
2

- After drilling is complete, discard templete and proceed with weight installation.
- Une fois le perçage terminé, jetez le gabarit et procédez à l'installation du poids.
- Una vez completada la perforación, deseche la plantilla y continúe con la instalación del peso.



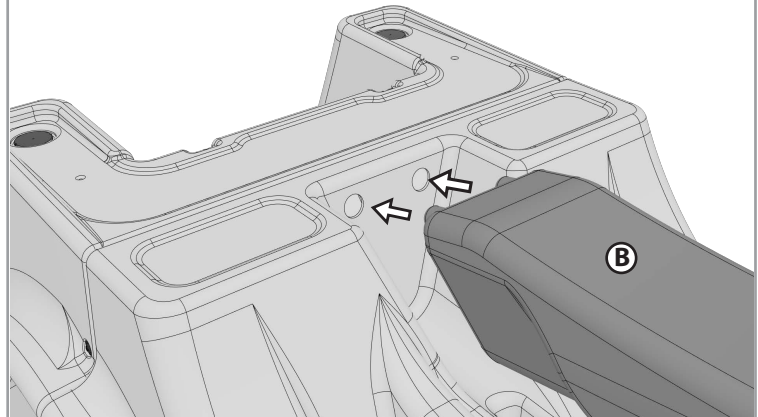
3

Fill with approximately 18 lbs (8.165 kgs) of sand.
Llene con aproximadamente 8.165 kgs (18 lbs) de arena.
Remplissez avec environ 8.165 kgs(18 lbs) de sable.

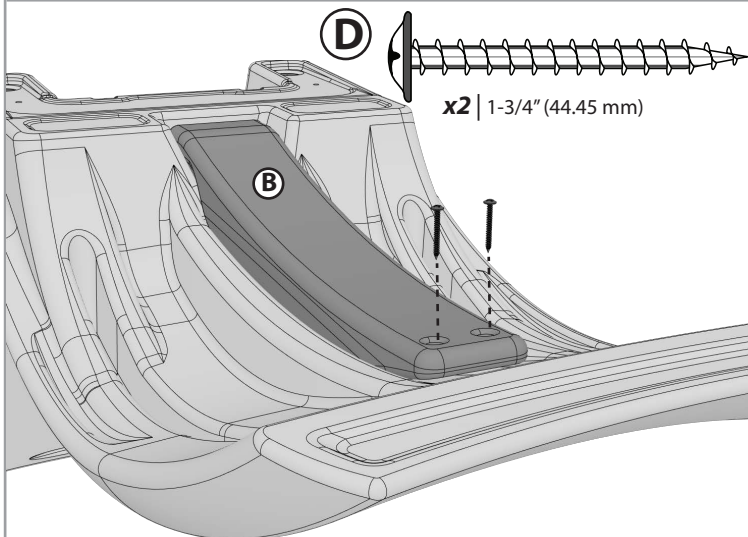


4

Make sure the plastic end cap fit snugly into the holes.
Assurez-vous que les embouts en plastique sont bien ajustés dans les trous.
Asegúrese de que las tapas de plástico de los extremos encajen perfectamente en los orificios.



5



6

